


Sexually Transmitted Infections (STI's)

Jan Farrell

Nurse Consultant Urology / Andrology

Rotherham Hospital NHSFT

South Yorkshire

- 
- * STI's have a significant immediate and long term complications.
 - * Human behaviour is diverse and continues to risks infections
 - * Increasing numbers of Men and Women over 50 yrs being diagnosed with STI's

Hepatitis / HBV - 10

- * Hepatitis B or HBV – mostly associated with sexual transmission.
- * Symptoms;- fever, dark urine, joint pain, decreased appetite, tiredness and jaundice.
- * HBV – may lead to Liver damage / cirrhosis, cancer and organ failure.
- * Prevention;- HBV vaccination, protected sex (condoms)

Herpes -9

- * Viral STD – Herpes simplex
- * Affects men and women ;- oral, vaginal, rectal
- * Symptoms;- high temp, blisters, vaginal discharge, pain, itching and lethargy
- * Treatment – No cure!, may benefit from antiviral drugs and creams to relieve itching. Can recur.

Herpes Simplex

* Penile



* Vaginal



Herpes, female



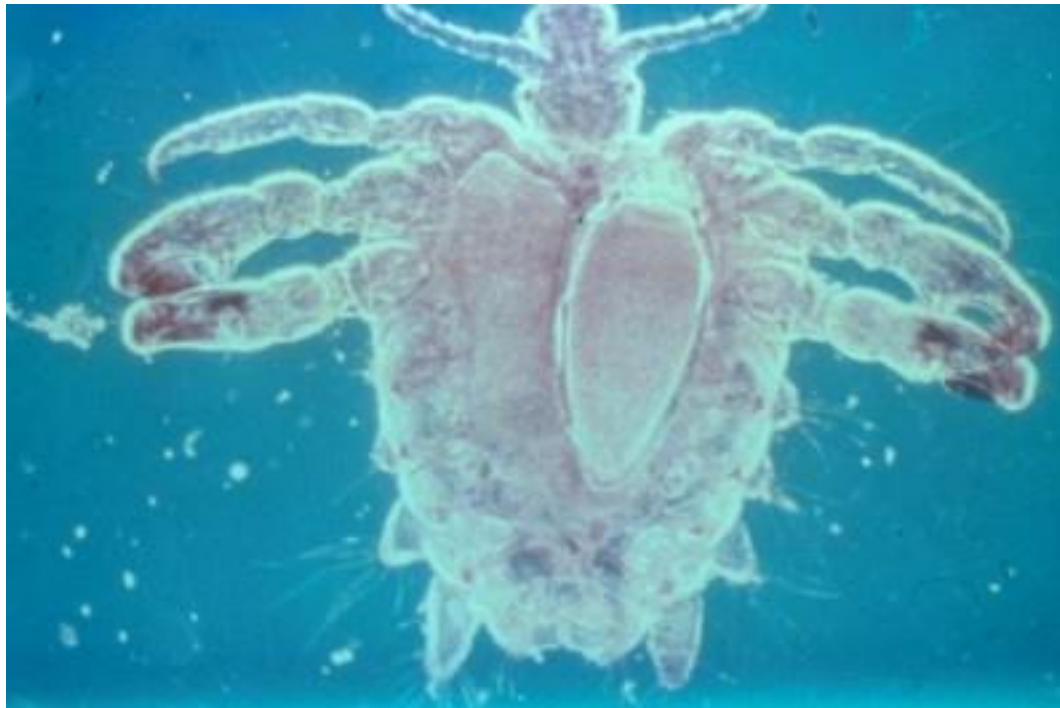
HIV / AIDS - 8

- * Human immunodeficiency virus (HIV)
- * Weakens Immune system = vulnerable to infection and disease
- * Transmission = bodily fluids ;- Blood, Semen, vaginal secretions
- * Management – no curative treatment but virus can be suppressed

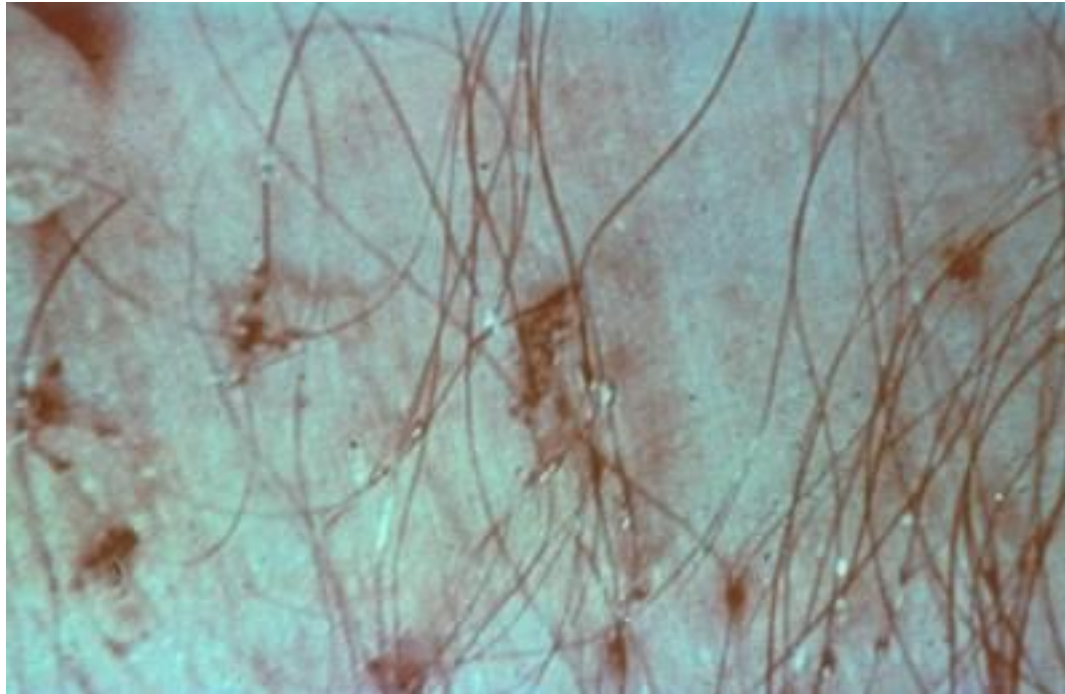
Lice and Scabies - 7

- * Parasitic insects
- * Infest into genital hair (can be found in other course bodily hair – eg armpits, eyebrows)
- * Transmission;- bodily contact, bedding, towels, clothing)
- * Symptoms;- itching / scratching affect area, tiny bites appear as blue spots
- * Treatment – OTC creams / medication

Female Crab Louse



Lice in pubic area



Scabies

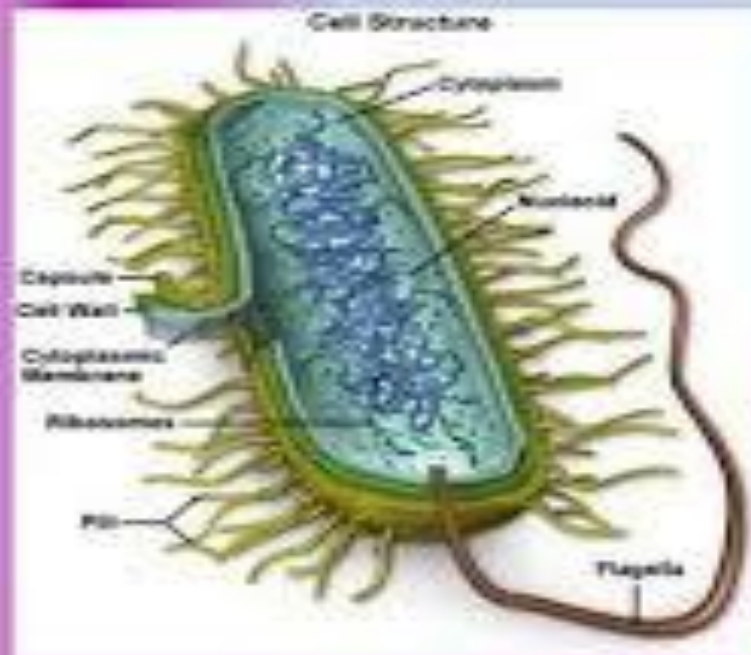


Microplasmia Genitalium (MG) - 6

- * Increasing in prevalence
- * Becoming more common – especially in teenagers
- * Bacterial infection
- * Symptoms ;- pelvic pain, inflammation of cervix
- * Treatment;- antibiotics
- * Long term effects ;- can lead to chronic pelvic pain, infertility

MG

Mycoplasma genitalium



- Description: Mycoplasma Genitalium is a tiny microscopic parasitic organism. It lives in primate genital cells and respiratory tracts. It is considered to have the smallest genome of any species.

Syphilis -5

- * Bacterial infection
- * Spread by contact with syphilitic sores
- * Symptoms ;- appearance of painless sores, genitalia and mouth, know as Chancres, occasionally a rash and discharge.
- * Treatment;- in the past – fatal disease (multi organ failure). Now treated effectively with antibiotics.
- * Prevention – condoms can reduce risk

Syphilis - *Treponema pallidum*



Secondary syphilis - papulosquamous rash



Human Papilloma Virus (HPV) -4

- * Viral Infection
- * Symptoms – can be none, can cause genital warts.
- * Virus linked to ;-cervical, mouth and throat cancer
- * Mouth Cancer rates risen by 135% in UK over last 20 years – HPV
- * Prevention;- Vaccination offered to all 11/12 year old males and females.
- * Positive uptake of vaccinations, therefore HPV is becoming less common

HPV



Gonorrhoea - 3

- * Bacterial STD, nickname 'the Clap'
- * Symptoms;- usually delayed
- * Men;- penile discharge, dysuria, painful or swollen testicles
- * Women;- painful SI, dysuria, vaginal discharge / bleeding.
- * Can affect other areas;- anal/rectal and mouth/throat
- * Treatment ;- antibiotics
- * Long term effects;- infertility (male and female)

Gonorrhea



Trichomoniasis -2

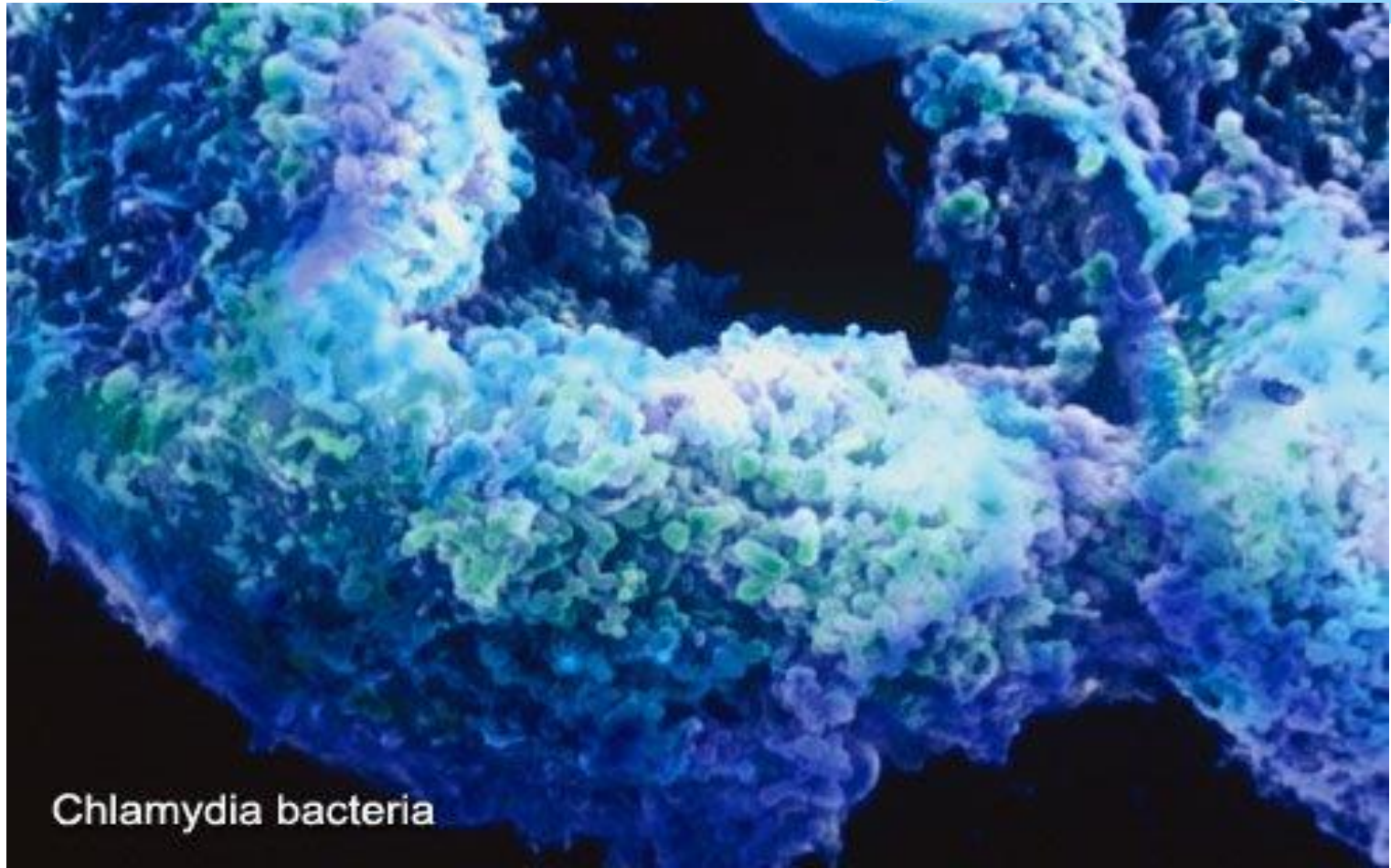
- * Affects both men and women
- * Symptoms;-
- * men –rare but occasionally have discharge and dysuria
- * Female – Vaginal itching , pain on SI & urination
- * Treatment – Antibiotics – Metronidazole
- * Resistant strains exist

Trichomoniasis



Chlamydia -1

- * Commonest STD in UK
- * Affects Men and Women
- * Asymptomatic in early months
- * Symptoms;-
 - Male – pain or swelling in urethra and testicles, penile discharge
 - Female – abnormal discharge, dysuria.
- ❖ Treatment;- curable, antibiotics
- ❖ Long term effects;- damage to reproductive system, infertility
- * Prevention;- Condoms



Chlamydia bacteria

Thank You!

